

5. Applications

1. Connect the 'BOOST' and the 'TIMED ON' as required in Fig. 6,7 & 8.
2. Assemble the timer to the back plate by aligning the location pins on the top of the backplate with the cut outs provided on the clock body. Lock in position using the two fixing screws.

APPLICATIONS

This timer controls the use of cheap rate electricity during the night to heat the water in your tank for the following applications:

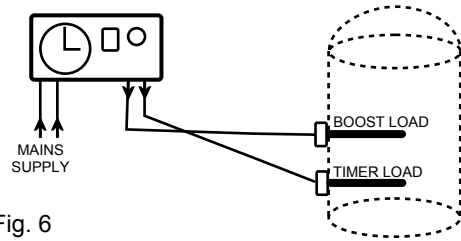


Fig. 6
Two separate immersion heaters.

Note: Both Indicator lamps will illuminate when either output is selected

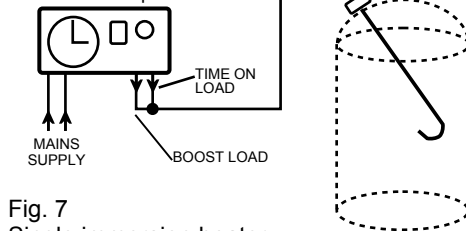


Fig. 7
Single immersion heater.

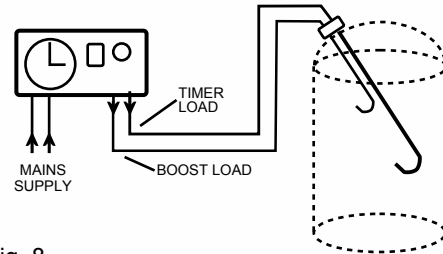


Fig. 8
Dual immersion heaters.

6. Specification

Voltage: 220-240V AC 50Hz
Max Ambient Temperature: 40 C
Max Current: 16A resistive / 2A inductive
Boost: adjustable between 15 and 120 mins
Fitting: Surface mounting
Dims (mm): 86H x 155W x 55D
Protection Category: IP20

Complies with European Norm EN 60730-1: 2011

Automatic Electrical Controls for Household and similar use, and European Directives: LVD; EMC; RoHS

www.corgicontrols.co.uk
Corgi Controls Tonbridge TN9 1TB



**ECONOMY 7
TIMER**

For general purpose use

Installer instructions

ECOSAVE-C Economy 7 / Multi Tariff Timer
Min switching 15 Minutes

1. **Notice**
2. **Installation**
3. **Surface / Box fitting**
4. **Wiring connections**
5. **Applications**
6. **Specification**

1. Notice

Please read the instructions fully before attempting installation.

IMPORTANT

This unit should be installed to current IEE wiring regulations. If in doubt consult a qualified electrician.

- Timer must not be mounted on a flammable surface.
- Ensure that the timer does not come into contact with any combustible materials such as towels or bedding.
- Ensure at least a 300 mm air space is allowed around the timer.

2. Installation

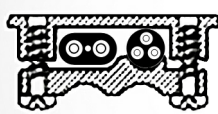
INSTALLATION

THIS TIMER SHOULD NOT BE FITTED ONTO A CONDUCTIVE SURFACE (i.e. METAL)

Before you begin the installation.

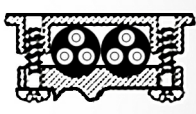
1. Disconnect the mains supply
2. The Dual Tariff Boost Timer is suitable for fixed wiring only.
3. The following cable cross sections are possible:

Fig. 1



3 x 2.5 mm²
(2X) output

Fig. 2



3 x 4mm²
(2X) output

3. Surface / Box fitting

1. Select the single or twin box fixing points on the plate.
2. If the timer is to be surface mounted: select the single or twin fixing points on the back plate.
3. Wire entry from rear, both sides possible.

Note:

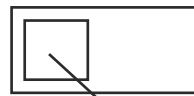
If connecting to terminals with stranded flex, the supplied crimp ferrules **MUST** be used.

Fig. 3



box

Fig. 4



box

4. Wiring Connections

1. Connect main cable as shown in Fig. 5 below.
2. Select desired flexible cable outlet to immersion heaters and using pliers remove the selected slot.
3. Clamp cables using attached cable clamp.

NOTE:

Use the terminals 1 to 5 as identified.

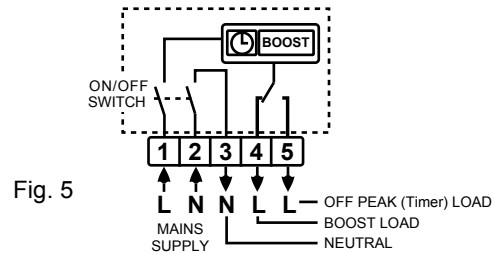


Fig. 5